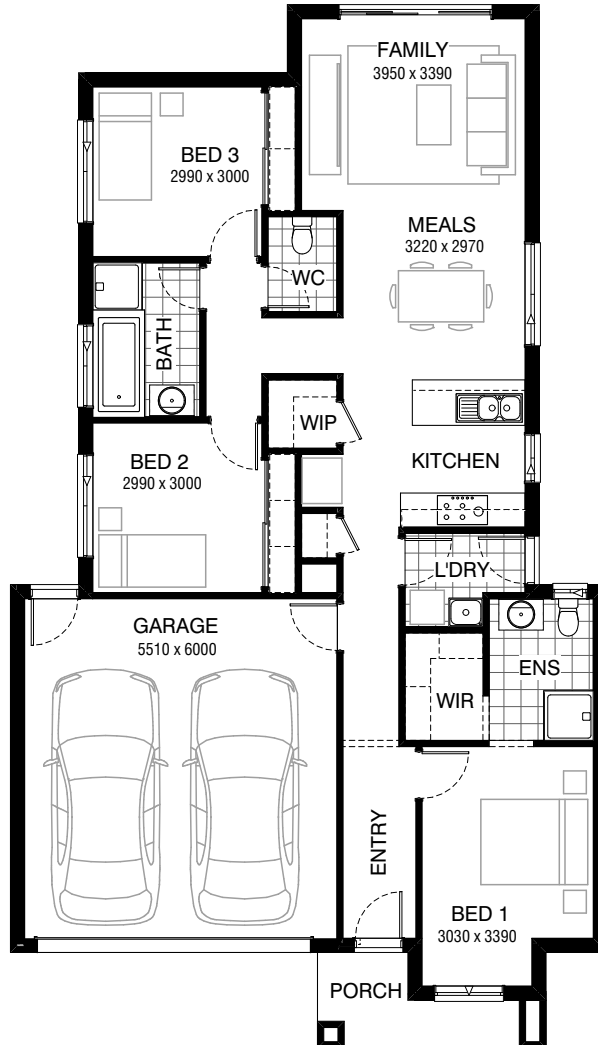


Total squares **16.5sq**



**Facades available:**

Drysdale, Arkley, Nolan	
Dowd, Haring	
<b>Overall home width</b>	<b>10.50m</b>
<b>Overall home length</b>	<b>18.35m</b>

Residence	112.1m <sup>2</sup>	12.1sq
Garage	36.1m <sup>2</sup>	3.9sq
Porch	4.7m <sup>2</sup>	0.5sq
<b>Total</b>	<b>152.9m<sup>2</sup></b>	<b>16.5sq</b>

**FLOORPLAN OPTIONS**




All available ready-to-go floorplan options for this design can be viewed on the following pages, or visit [www.burbank.com.au](http://www.burbank.com.au).

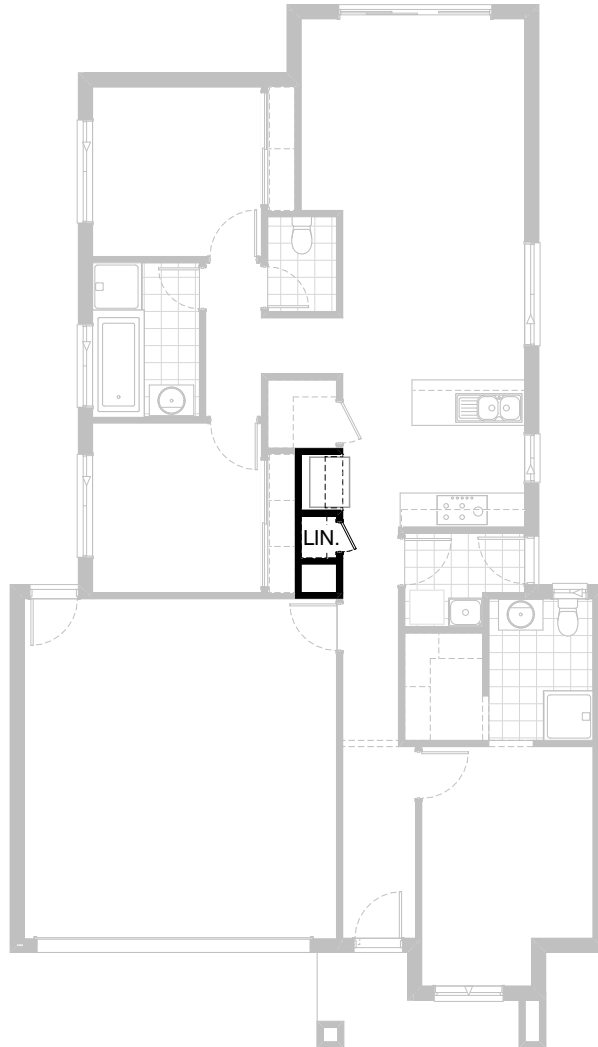
Listed details based on Drysdale façade floorplan (illustrated)

\*Copyright conditions. All photos and illustrations are representative only. Floor plans and specifications may be varied by Burbank without notice, the dimensions are diagrammatic only and a Building Contract with final drawings will display correct dimensions and detail. All designs are the property of Burbank and must not be used, reproduced, copied or varied, wholly or in part without written permission from an authorised Burbank representative. Copyright Burbank Australia Pty Ltd. ABN 91 007 099 872. Builders Registration Number CDB-U-52603.

**Call 13 BURBANK**  
**Visit [burbank.com.au](http://burbank.com.au)**

**FLOORPLAN OPTIONS**

 **3**    **2**    **2**



**Option K-1**

Provide Kitchen Option with open shelf above refrigerator space.  
Reduce linen cupboard by 50mm and provide 1no. 520mm flush panel  
hinged door in lieu of standard

**FLOORPLAN OPTIONS**



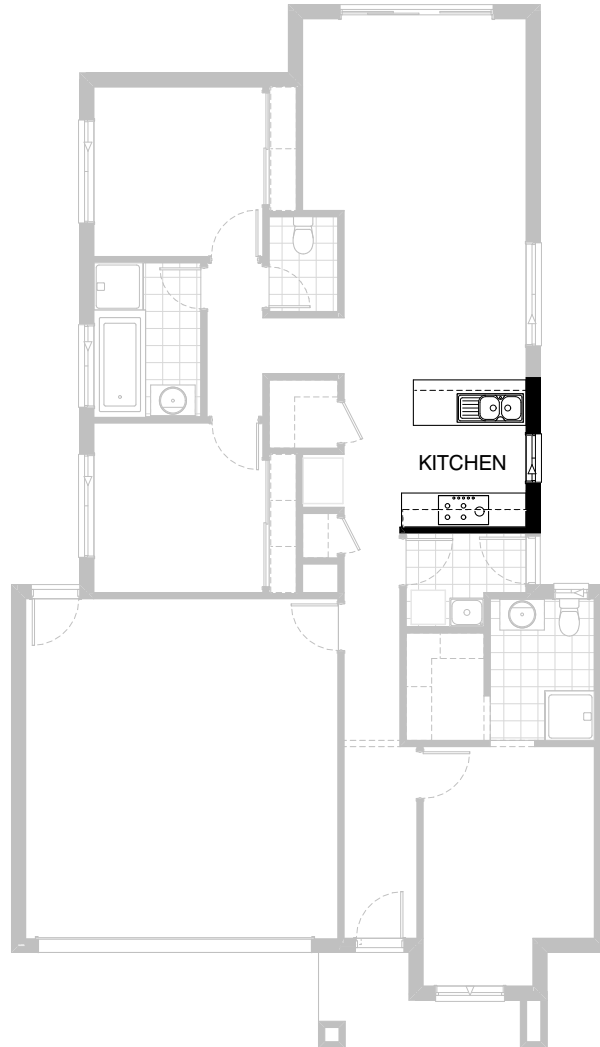
**3**



**2**



**2**

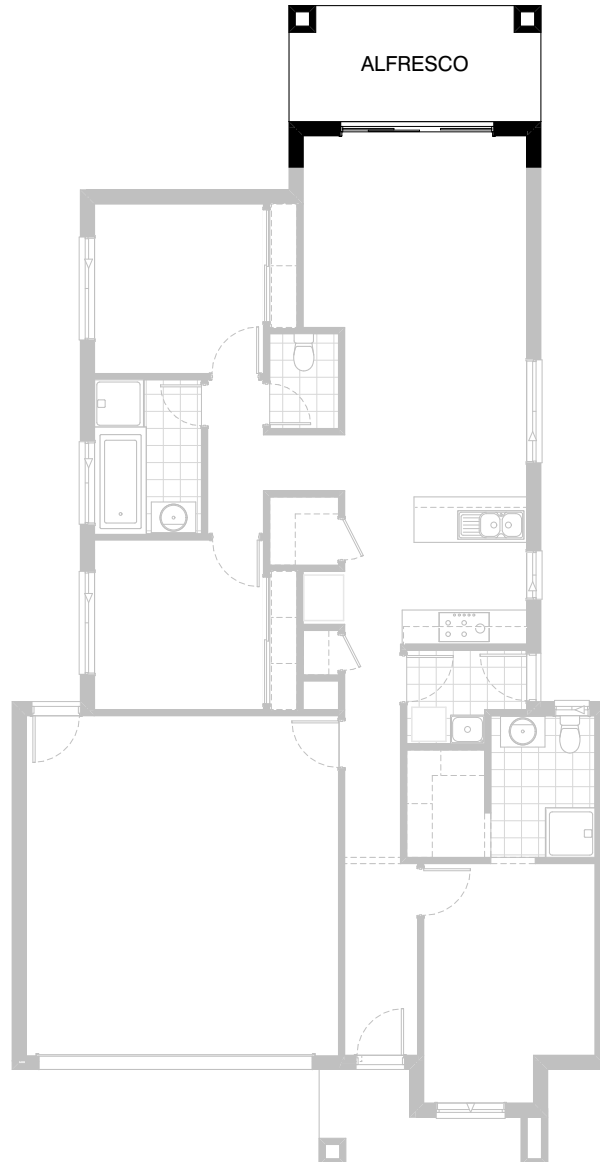


**Option K-2**

Provide Kitchen Option with  
2no. 600mm base cupboards,  
1no. 900mm under bench oven,  
1no. 900mm hotplate,  
2no. 600mm overhead cupboards,  
1no. 900mm retractable rangehood.

Kitchen Island to remain standard.

**FLOORPLAN OPTIONS**

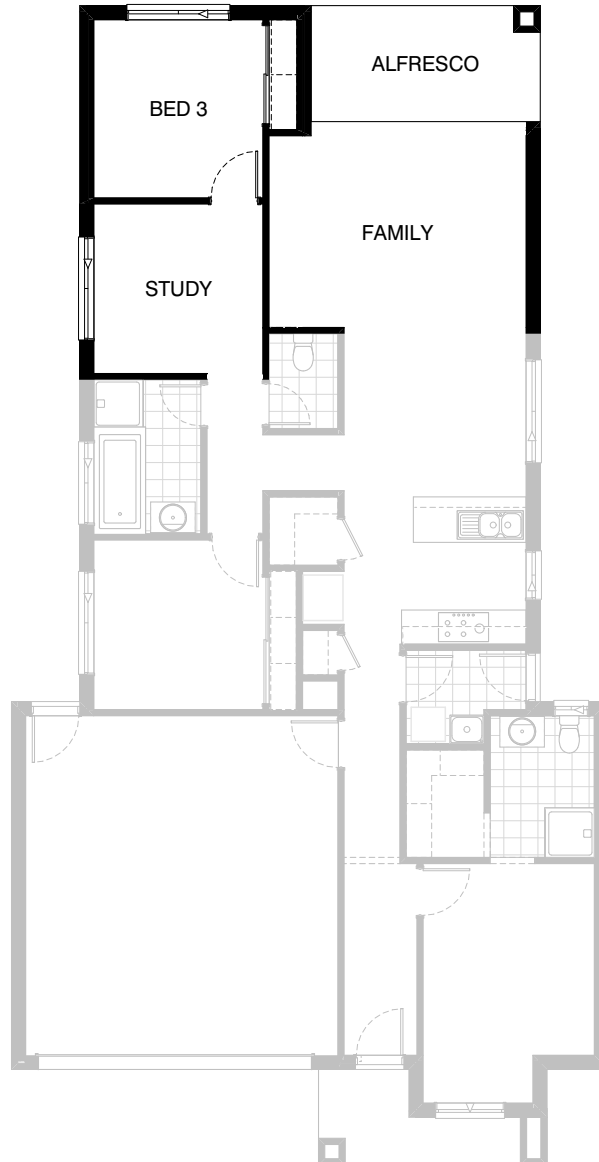


**Option EP1-1**

Provide 2040mm x4430mm Alfresco under roof line with  
Inc. concrete waffle slab,  
2No. 470mm x 470mm brick piers,  
Plastered ceiling and light point to the rear of the Living area.

**Note area increases by 9.03m<sup>2</sup>**  
**Note length increases by 2040mm**

FLOORPLAN OPTIONS



**Option EP1-2**

Provide floor plan option by providing  
2000mm x 4030mm Alfresco under roof line with 470mm x 470mm brick pier  
Provide 3000mm x 3000mm study between Bed 3 and Bathroom  
& provide an additional 1200mm x 1810mm aluminium sliding window  
to rear of Bed 3.

**Note area increases by 20.93m<sup>2</sup>**  
**Note length increases by 2040mm**